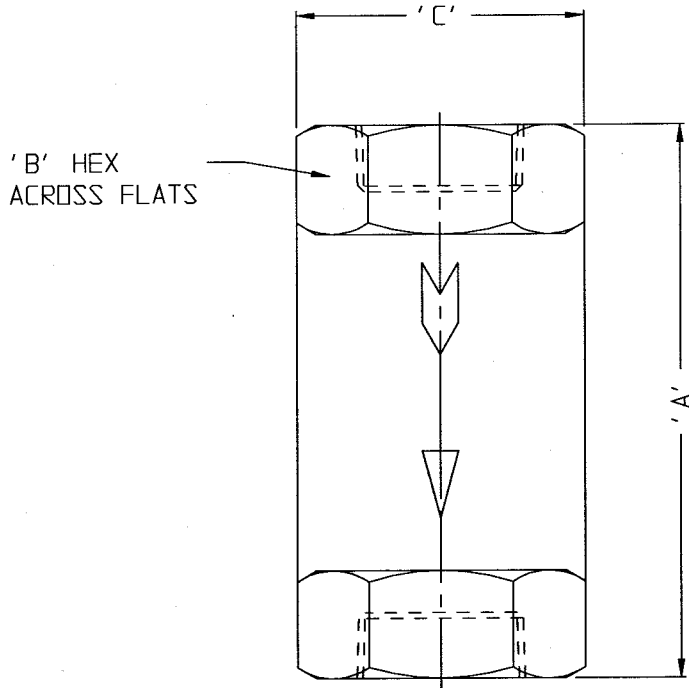


61-10X/62-10X

CUSTOMER DWG



'B' HEX
ACROSS FLATS

3"	61-100	8 1/2"	4 1/8"	5 5/16"
2 1/2"	61-109	7"	3 1/2"	4 1/2"
2"	61-108	6"	3"	3 11/16"
1 1/2"	61-107	4 15/16"	2 1/2"	2 13/16"
1 1/4"	61-106	4 3/16"	2 1/8"	2 3/8"
1"	61-105 62-105	3 1/2"	1 3/4"	1 15/16"
3/4"	61-104 62-104	2 7/8"	1 3/8"	1 1/2"
1/2"	61-103 62-103	2 5/16"	1 1/8"	1 1/8"
3/8"	61-102 62-102	2 1/8"	1 1/8"	1 1/8"
1/4"	61-101 62-101	2 1/16"	1 1/8"	1 1/8"
THD SIZE (NPT)	PART NO	'A'	'B'	'C'

CUSTOMER DWG

DIXON VALVE & COUPLING CO.
U. S. A.

TITLE
BALL-CONE CHECK VALVE

DRAWN BY: 5-7-97
ANDREW JINKS

CHECKED BY: 5-7-97
[Signature]

APPROVAL: *[Signature]*

MAT'L 61-10X: BRASS
62-10X: STAINLESS STEEL

61-10X/62-10X

AGREEMENT TO MAINTAIN CONFIDENTIALITY

This drawing is owned by Dixon Valve & Coupling Co. and shall be returned upon demand. It is loaned on condition that it shall not be copied or reproduced or submitted to others without the owners consent. In accepting it subject to this condition the recipient further agrees that this drawing or any design detail or concept disclosed herein shall not be used in any way detrimental to or in competition with the Owner. If the recipient does not agree to the terms of this agreement, they shall return this drawing immediately.



The Right Connection™