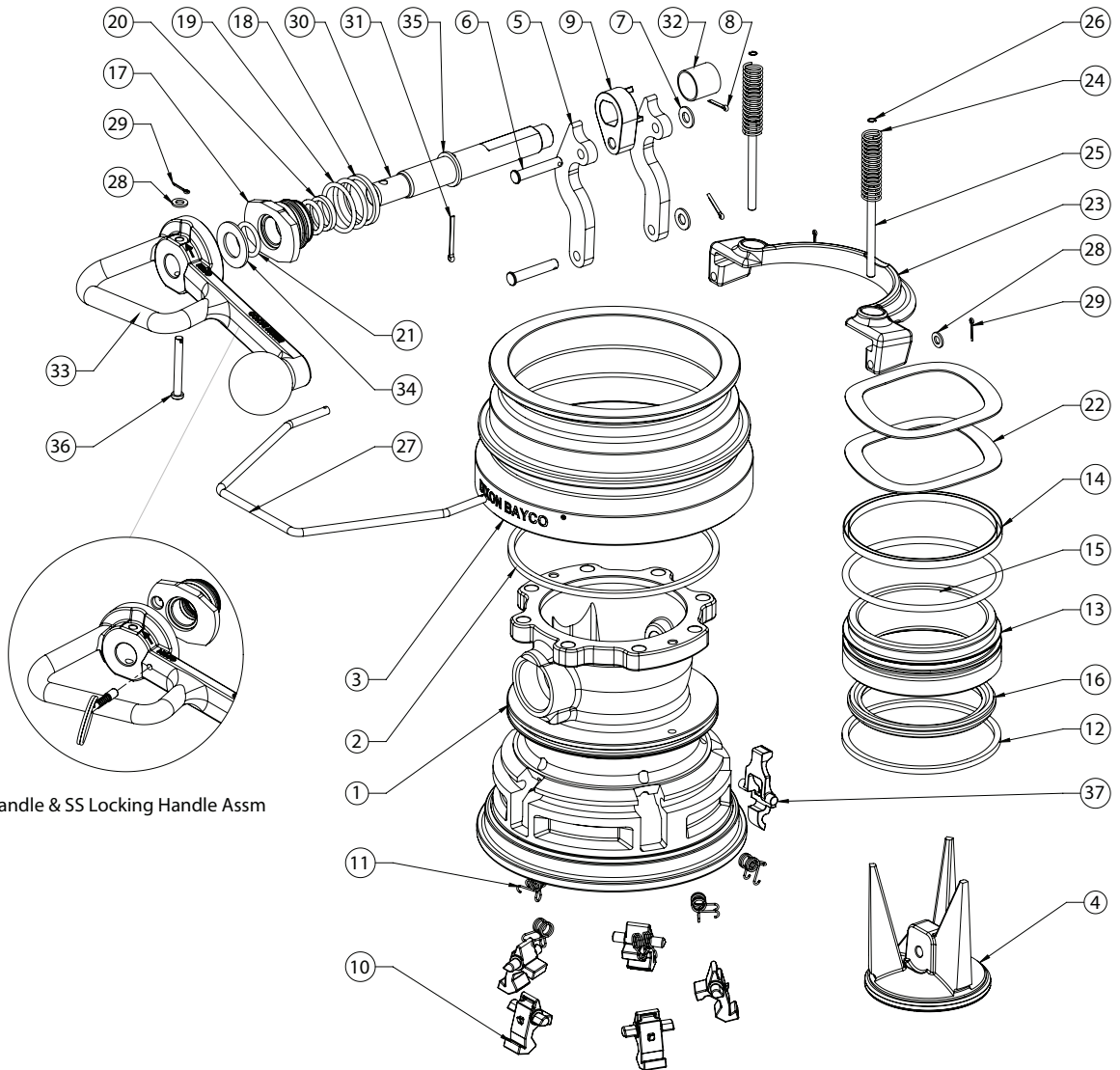


# Fuel Tanker Loading and Unloading

## 5300/5400 Series API Couplers

### API Bottom Rack Loading Fittings



Stainless Handle & SS Locking Handle Assm

Product instruction sheets and technical data can be viewed on our website at [dixonvalve.com](http://dixonvalve.com)

# Fuel Tanker Loading and Unloading

## Bill of Materials

## Qty of Components per Unit

Item #	Description	Part #	5300	5300B	5300BC	5300BCL	5300G	5400	5400B	5400G
1	body	-	1	1	1	1	1	1	1	1
2	body dust ring	112173	1	1	1	1	1	1	1	1
3	sleeve assembly	400684	1	1	1	1	1	1	1	1
4A	poppet	Use kit 5354K19	1	1	1	1	1	1	1	1
4B	poppet for crude oil	Use kit 5354K20	N/A	N/A	1	1	N/A	N/A	N/A	N/A
5	bent link	112151	2	2	2	2	2	2	2	2
6	link pin	391141	2	2	2	2	2	2	2	2
7	link washer	112158	2	2	2	2	2	2	2	2
8	304SS cotter pin	110721	2	2	2	2	2	2	2	2
9	drive link	112148	1	1	1	1	1	1	1	1
10	interlocking cam	112147	5	5	5	5	5	5	5	5
11	torsion spring	112149	5	5	6	6	5	5	5	5
12	nose piece dust ring	112174	1	1	1	1	1	1	1	1
13	nose piece	Use kit 5354K7, 5354K8, 5354K9, 5354K10, 5354K11, 5354K12 & 5354K20	N/A	N/A	N/A	N/A	N/A	1	1	1
14	PTFE U-Seal 350 (optional) <sup>1</sup>	112164	1	1	1	1	1	1	1	1
15A	O-ring 2-350, Buna	Use kit 5354K7, 5354K8, 5354K13 or 5354K14	1	N/A	N/A	N/A	N/A	1	N/A	N/A
15B	O-ring 2-350, FKM B	Use kit 5354K9, 5354K10, 5354K15, 5354K16 or 5354K20	N/A	1	1	1	N/A	N/A	1	N/A
15C	O-ring 2-350, FKM GFLT	"Use kit 5354K11, 5354K12, 5354K17 or 5354K18"	N/A	N/A	N/A	N/A	1	N/A	N/A	1
16A	replaceable nose seal, Buna	Use kit 5354K13 or 5354K14	N/A	N/A	N/A	N/A	N/A	1	N/A	N/A
16B	replaceable nose seal, FKM B	Use kit 5354K15 or 5354K16	N/A	N/A	N/A	N/A	N/A	N/A	1	N/A
16C	replaceable nose seal, FKM GFLT	Use kit 5354K17 or 5354K18	N/A	N/A	N/A	N/A	N/A	N/A	N/A	1
16D	bonded nose seal, Buna	Use kit 5354K7 or 5354K8	1	N/A	N/A	N/A	N/A	N/A	N/A	N/A
16E	bonded nose seal, FKM B	Use kit 5354K9 or 5354K10	N/A	1	N/A	N/A	N/A	N/A	N/A	N/A
16 F	bonded nose seal, FKM GFLT	Use kit 5354K11 or 5354K12	N/A	N/A	N/A	N/A	1	N/A	N/A	N/A
16G	bonded nose seal for crude oil	Use kit 5354K20	N/A	N/A	1	1	N/A	N/A	N/A	N/A
17A	bearing	341790	1	1	N/A	N/A	1	1	1	1
17B	bearing for crude oil	400696	N/A	N/A	1	N/A	N/A	N/A	N/A	N/A
17C	bearing for crude oil with lock handle	400696	N/A	N/A	NA	1	N/A	N/A	N/A	N/A
18	PTFE U-Seal 220 (Optional) <sup>1</sup>	112163	1	1	1	1	1	1	1	1
19A	O-ring 2-220, Buna	Use kit 5354K1, 5354K2 or 5354K20	1	N/A	N/A	N/A	N/A	1	N/A	N/A
19B	O-ring 2-220, FKM B	Use kit 5354K3, 5354K4 or 5354K20	N/A	1	1	1	N/A	N/A	1	N/A
19C	O-ring 2-220, FKM GFLT	Use kit 5354K5 or 5354K6	N/A	N/A	N/A	N/A	1	N/A	N/A	1
20	PTFE U-Seal 212 (optional) <sup>1</sup>	112162	1	1	1	1	1	1	1	1
21A	O-ring 2-212, Buna	Use kit 5354K1 or 5354K2	2	N/A	N/A	N/A	N/A	2	N/A	N/A
21B	O-ring 2-212, FKM B	Use kit 5354K3, 5354K4, 5354K20	N/A	2	2	2	N/A	N/A	2	N/A
21C	O-ring 2-212, FKM GFLT	Use kit 5354K5 or 5354K6	N/A	N/A	N/A	N/A	2	N/A	N/A	2
22A	wave spring washer	112172	2	2	N/A	N/A	2	2	2	2
22B	wave washer for crude oil	112282	N/A	N/A	1	1	N/A	N/A	N/A	N/A
23	bail	341788	1	1	1	1	1	1	1	1
24	bail spring	112150	2	2	2	2	2	2	2	2
25	bail pin	112175	2	2	2	2	2	2	2	2
26	internal retaining ring	112176	2	2	2	2	2	2	2	2
27	release	391139	1	1	1	1	1	1	1	1
28	washer	111562	3	3	3	3	3	3	3	3
29	cotter pin	111563	3	3	3	3	3	3	3	3
30	shaft	391140	1	1	1	1	1	1	1	1
31	shaft cotter pin	112307	1	1	1	1	1	1	1	1
32	spacer	391142	1	1	1	1	1	1	1	1
33A	handle (aluminum)	341789	1	1	-	-	1	1	1	1
33B	handle (stainless steel)	112392	N/A	N/A	1	N/A	N/A	N/A	N/A	N/A
33B	handle (stainless steel)	400713	N/A	N/A	N/A	1	N/A	N/A	N/A	N/A
34	shaft outside washer	112160	1	1	1	1	1	1	1	1
35	shaft inside washer	112159	1	1	1	1	1	1	1	1
36	clevis pin	112500	1	1	1	1	1	1	1	1
37	latch	112240	1	1	1	1	1	1	1	1

<sup>1</sup> Items 14, 18 and 20 are optional PTFE U seals. When the U seals are added to the coupler they isolate the main rubber seals from the liquid being conveyed, thereby increasing the longevity of the rubber seals.

N/A = "Not Applicable"

Product instruction sheets and technical data can be viewed on our website at [dixonvalve.com](http://dixonvalve.com)

# Fuel Tanker Loading and Unloading

## 5300/5400 Series API Couplers

### API Bottom Rack Loading Fittings

#### Repair Kits

Part #	Description	Include items #
<b>5354K1</b>	Buna shaft seal kit: for 5300 and 5400	19A, 21A, 34, 35
<b>5354K2</b>	Buna shaft seal kit with optional PTFE U Seals: for 5300 and 5400	18 <sup>1</sup> , 19A, 20 <sup>1</sup> , 21A, 34, 35
<b>5354K3</b>	FKM-B shaft seal kit: for 5300B and 5400B	19B, 21B, 34, 35
<b>5354K4</b>	FKM-B shaft seal kit with optional PTFE U Seals: for 5300B and 5400B	18 <sup>1</sup> , 19B, 20 <sup>1</sup> , 21B, 34, 35
<b>5354K5</b>	FKM GFLT shaft seal kit: for 5300G and 5400G	19C, 21C, 34, 35
<b>5354K6</b>	FKM GFLT shaft seal kit with optional PTFE U Seals: for 5300G and 5400G	18 <sup>1</sup> , 19C, 20 <sup>1</sup> , 21C, 34, 35
<b>5354K7</b>	Buna bonded nose seal kit: for 5300	12, 13, 15A, 16D
<b>5354K8</b>	Buna bonded nose seal kit with optional PTFE U seal: for 5300	12, 13, 14 <sup>1</sup> , 15A, 16D
<b>5354K9</b>	FKM-B bonded nose seal kit: for 5300B	12, 13, 15B, 16E
<b>5354K10</b>	FKM-B bonded nose seal kit with optional PTFE U seal: for 5300B	12, 13, 14 <sup>1</sup> , 15B, 16E
<b>5354K11</b>	FKM GFLT bonded nose seal kit: for 5300G	12, 13, 15C, 16F
<b>5354K12</b>	FKM GFLT bonded nose seal kit with optional PTFE U seal: for 5300G	12, 13, 14 <sup>1</sup> , 15C, 16F
<b>5354K13</b>	Buna replaceable nose seal kit: for 5400	12, 15A, 16A
<b>5354K14</b>	Buna replaceable nose seal kit with optional PTFE U seal: for 5400	12, 14 <sup>1</sup> , 15A, 16A
<b>5354K15</b>	FKM-B replaceable nose seal kit: for 5400B	12, 15B, 16B
<b>5354K16</b>	FKM-B replaceable nose seal kit with optional PTFE U seal: for 5400B	12, 14 <sup>1</sup> , 15B, 16B
<b>5354K17</b>	FKM GFLT replaceable nose seal kit: for 5400G	12, 15C, 16C
<b>5354K18</b>	FKM GFLT replaceable nose seal kit with optional PTFE U seal: for 5400G	12, 14 <sup>1</sup> , 15C, 16C
<b>5354K19</b>	Valve assembly repair kit: for 5300, 5300B, 5300G, 5400, 5400B, 5400G	4, 5, 6, 7, 8, 9, 34, 35
<b>5354K20</b>	crude conversion kit	4B, 16G, 17C, 22B, 31
<b>5354K21</b>	locking handle kit	17C, 21B, 28, 29, 31, 33B, 34, 36

<sup>1</sup> Items 14, 18 and 20 are optional PTFE U seals. When the U seals are added to the coupler they isolate the main rubber seals from the liquid being conveyed, thereby increasing the longevity of the rubber seals.